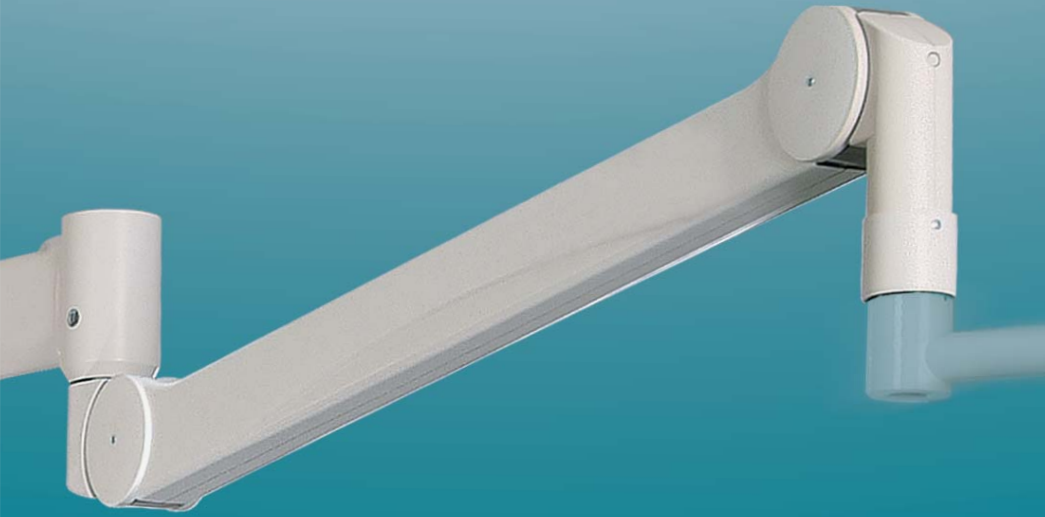


SPRING ARMS

OPERATING ROOM
DIAGNOSTIC ROOM
TREATMENT ROOM



ACROBAT[®] 2000

Movement Technology up to 21 kg

ondal[®]
Medical Systems

Movement – light as a feather



ACROBAT® 2000



MOVEMENT TECHNOLOGY FOR LIGHT AND CAMERA SYSTEMS, MEDICAL APPARATUS AND FLAT SCREEN MONITORS.

The ACROBAT® 2000 is a spring arm product range for weights from 1.5 to 21 kg. It has been specially developed for the convenient carrying of lights, cameras, medical apparatus and flat screen monitors. The system provides an easy and smooth movement of the adapted equipment. End devices can be placed into the position best suited to the operator's need due to the combination of the horizontally moveable extension arm and height adjustable spring arm.

ACROBAT® 2000 system is available as single or dual ceiling mount (5), as wall mount (4&9) or floor version on a mobile stand (2).

The spring arm ACROBAT® 2000 is also suitable for Central Axis (3) and Central Axis Slim Line (8).

Load and height adjustment can be changed at any time without dismantling the system. The variable height adjustment helps to avoid collisions with the ceiling.



The unique HDC unlimited Technology of Ondal allows a direct transmission of HD-SDI signals without delay. HDC unlimited Technology also allows the rotation of flat screen pendant systems without stop.

Non-stop rotation with simultaneous transmission of power and video signals is provided by slip ring commutators in the rotating joints. This allows lights and cameras to be positioned completely flexibly.

The standard ACROBAT® 2000 system is equipped with exact parallel guidance to maintain the alignment of the end devices. Operating lights can be held exactly at their point of focus while being adjusted.

Several interfaces are available for the connection of devices like surgical or exam lights and flat screen monitors. Upon request, we also develop individual connection elements according to customer requirements, including integrated power and signal transmission.

INTERFACES TO END DEVICES

- Yokes for mounting OR lights and cameras (3)
- Adapter for mounting flat screen monitors (4)
- VarioView advanced for mounting of one flat screen monitor (6)
- VarioView dual for mounting of two flat screen monitors (7)
- Universal adapter for mounting of different end devices, e.g. radiators



SYSTEM OVERVIEW

SPRING ARM **ACROBAT® 2000**



EXTENSION ARM **ACROBAT® 2000**



TECHNICAL DATA

Type	ACROBAT® 2000
Payload up to	21 kg
Versions	Floor, wall and ceiling mount, connection to Central Axis
Color	RAL 9002, RAL 9010
Test symbol	UL
Mark of conformity	CE

CEILING MOUNT

FOR SPRING ARM

FOR EXTENSION ARM/ SPRING ARM

DUAL CEILING MOUNT



WALL MOUNT

FOR EXTENSION ARM/ SPRING ARM



ondal®

Movement – light as a feather

Mēdical ✦ PM

Toll Free: 1 (855) 404-7676

Email: info@medical-pm.com

www.medical-pm.com